

Cleaning the Pump

The pump should be cleaned on a regular basis as follows:

1. Disconnect the pump from the AC power and turn the power off before cleaning to avoid any electric shock hazard.
2. Using a damp sponge or cloth, clean the pump with warm, soapy water.
3. The pump is water resistant and may be placed under warm running water for cleaning.
4. Dry carefully with a soft cloth before reusing.

Warnings:

- Do not submerge the pump in water.
- Do not autoclave.
- The use of harsh cleaners/disinfectants and isopropyl alcohol, may damage the pump housing.

Warranty and Repair

Maintenance interval: every 5 years.
Only to be serviced/repaired by Compat® authorized service providers.

Alarm Handling

Always ensure appropriate and regular monitoring of tube feeding.
When an alarm sounds:

Step	Button	Direction
1		Press the key to acknowledge an alarm.
2		Resolve each alarm according to the specific instructions on the next page.
3		Press the key to resume feeding.

Alarm Messages and Resolution

Messages	Solution
	Check the tubing to ensure that it is completely filled. If additional priming is required, the auto-prime can be repeated.
	End administration or program a new nutritional therapy. NB: If <i>VOLUME DELIVERED THIS THERAPY</i> is not cleared before each new nutritional therapy, the end of therapy alarm may sound prematurely.
	Resume administration or switch pump off. Extend inactivity timeout by another 2 minutes by pressing .
	Close the pump door.
	Open the door and check for the correct installation of the cassette and tubing.
	If feed container is empty, replace to resume nutritional therapy. Check for air bubbles between the feed container and the pump and ensure the administration set is correctly connected to the feed container and fully primed.
	NO FLOW IN: Check for any kinking or blockage in the administration set tubing BEFORE the pump. NO FLOW OUT: Check for any kinking or blockage in the administration set tubing and the feeding tube AFTER the pump. Flush the feeding tube if necessary. Position all tubing to ensure feed can flow freely. Open the door, check the administration set installation and re-close the door.
	Connect pump to AC power via pump AC adapter. Charge battery.
	Remove source of magnetic interference or move pump to a different location.
	Turn pump off and restart to clear the error. If the error returns or repeats, do not use the pump. Contact your local Compat® representative or approved service provider.

Compat ella®

Quick Start Guide



Have you Met Compat Ella® ?

Contact Address:

Compat ella®

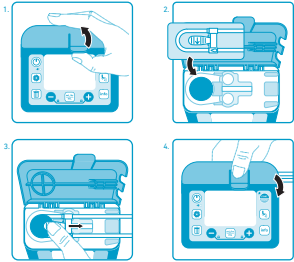
Quick Start Guide

- This Quick Start Guide does not replace the original *Instructions For Use* which must be read before use.
- Refer to the *Instructions For Use* supplied with your pump or available at www.compat.com
- Not for IV use. For enteral use only.
- For patients who require a constant supply of nutrition, use only commercially available enteral nutritional solutions, and ensure appropriate and regular monitoring of food administration.
- Interactive Training Centre: www.compatella.com



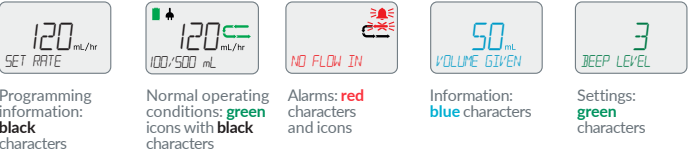
Preparing Pump and Set

- Open door by lifting the thumb tab.
- Wrap cassette loop around rotor. Note the arrow which shows correct orientation.
- Using your thumb, slide the cassette to the right to clip the cassette in the pump.
- Close the door by pressing on the "PUSH" symbol.



Warning: Use only Compat Ella® administration sets.

Screen Colors Overview



Button Function Overview

Button	Function
	Press and hold for 2 seconds to turn pump on or off.
	Press to start or pause a nutritional therapy or to snooze an alarm.
	Press and hold for 2 seconds to prime automatically.
	Press repeatedly to scroll through rate and volume programming.
	Press to decrease/increase values (hold: accelerates speed). Press both keys together to lock or unlock the keypad.
	Press to clear the on-screen value to default or to 0. Press and hold to reset all nutritional therapy parameters.
	Press repeatedly to scroll through delivery history values. Press and hold to access the rolling 30-day Volume History.
	Press repeatedly to scroll through pump settings.

Continuous Mode Feeding

Step	Button	Function
1		Turn the pump on.
2		Review the <i>VOLUME GIVEN THIS THERAPY</i>
3		When starting a new feeding therapy, clear the <i>VOLUME GIVEN THIS THERAPY</i>
4		Prime the administration set.
5		Use and to <i>SET RATE</i> 1 – 600 mL/Hr.
6		Use and to <i>SET VOLUME</i> 1 – 4000 mL/CONT*.
7		Start the nutritional therapy.

* *Continuous:* no feeding volume has been set. The pump will run continuously until the feed runs out.

- Precautions:**
- When programming a new therapy, make sure to clear the *VOLUME GIVEN THIS THERAPY* parameter (see step 3 above).
 - Before starting a therapy, verify all therapy parameters including rate, dose and volume given this therapy.

Interval Mode Feeding

Refer to the *Instructions For Use* for further information.